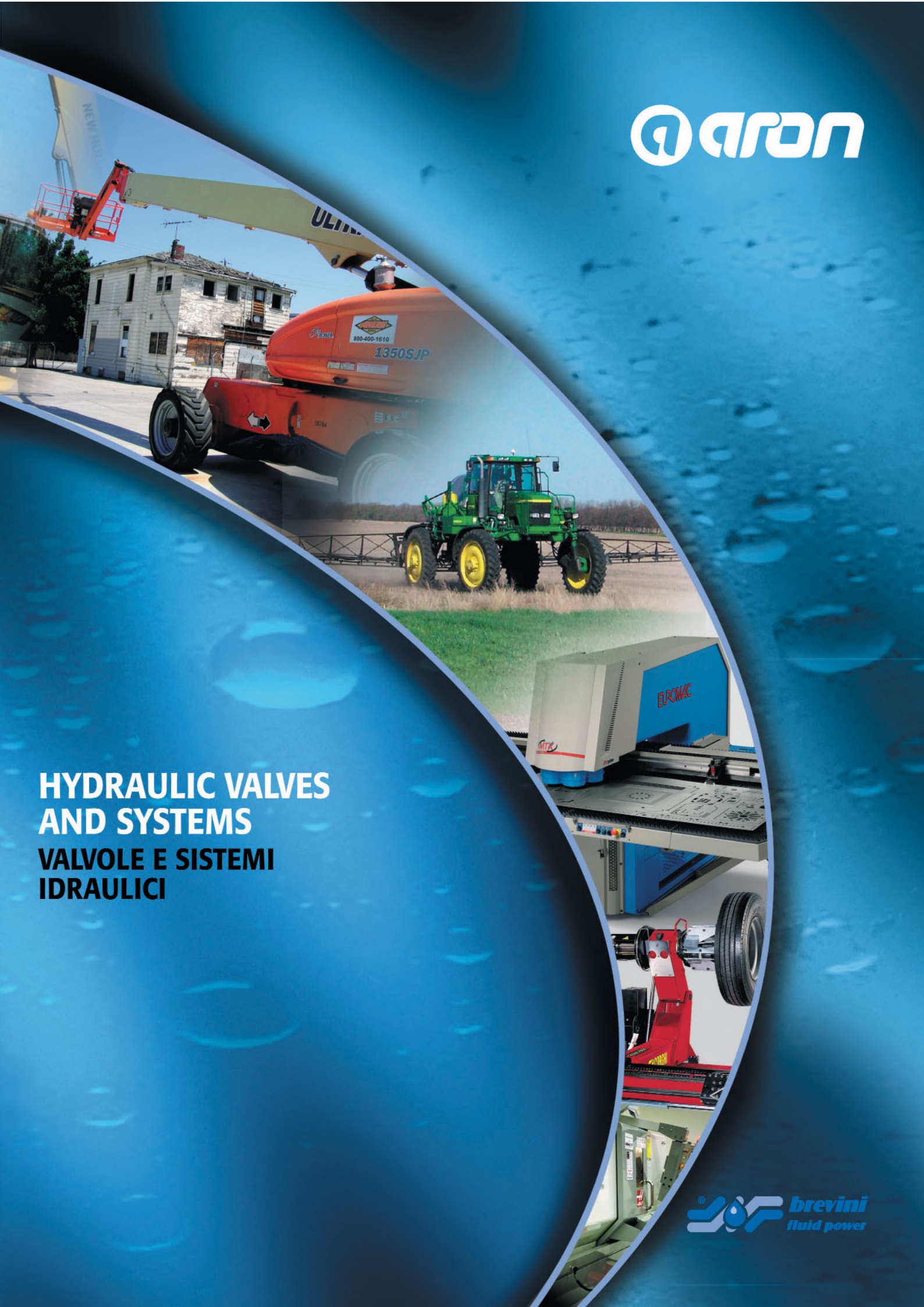


aron

**HYDRAULIC VALVES
AND SYSTEMS
VALVOLE E SISTEMI
IDRAULICI**

brevini
fluid power


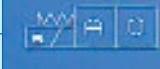

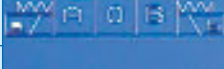


VALVOLE DIREZIONALI- DIRECTIONAL CONTROL




VALVOLE CETOP - CETOP VALVES

AD.2.E... Comando Elettrico Electric Operated		Q max. l/min. 20	P max. bar 250	INTERFACE CETOP 2		
ADC.3.E... Compatta a comando elettrico Electrical operated with reduced overall size		Q max. l/min. 30	P max. bar 250	INTERFACE CETOP 3		
AD.3.E... Comando elettrico Electric Operated		Q max. l/min. 60	P max. bar 320	INTERFACE CETOP 3		
AD.5.E... Comando elettrico Electric Operated		Q max. l/min. 100	P max. bar 320	INTERFACE CETOP 5		
ADP.5.E... Alte prestazioni comando elettrico High performances electric operated		Q max. l/min. 120	P max. bar 320	INTERFACE CETOP 5		
AD.3.*...		Q max. l/min. 60	P max. bar 320	INTERFACE CETOP 3		
AD.5.*...		Q max. l/min. 100	P max. bar 320	INTERFACE CETOP 5		
AD.3.P...		Comando pneumatico - Pneumatic operated				
AD.3.O...		Comando oleodinamico - Oleodynamic operated				
AD.5.O...		Comando pneumatico/oleodinamico - Oleodynamic pneumatic operated				
AD.3.M...		Comando meccanico - Mechanical operated				
AD.3/5.D...	Comando meccanico diretto - Direct mechanical operated					
AD.3/5.L...	Comando a leva - Lever operated					


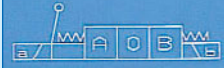
ELETTROVALVOLE PER AMBIENTI ESPLOSIVI - SOLENOID OPERATED VALVES FOR EXPLOSIVE ATMOSPHERE

AD.3.E...XS Valvola con sicurezza aumentata Increased safety solenoid valve		Q max. l/min. 60	P max. bar 320	INTERFACE CETOP 3	
In accordance with CENELEC EN50014-EN50019-EN50018- European rules Zone 1 - (Logo CE + ATEX) II 2 G EEx me II - Certificate n° BASEEFA02ATEX0199X.					
AD.3.E...XD Valvola antideflagrante Explosion proof solenoid valve		Q max. l/min. 40	P max. bar 320	INTERFACE CETOP 3	
In accordance with CENELEC: EN50014 (1997) and EN50018 (2000) - European rules (Logo CE + ATEX) II 2 G EEx d IIC T5 W11 - Certificate CESI 03 ATEX 212.					

ELETTROVALVOLE CON SENSORE DI POSIZIONE - SOLENOID VALVES WITH LVDT PROXIMITY SENSOR

ADP.3.V... Singolo solenoide One solenoid		Q max. l/min. 60	P max. bar 320	INTERFACE CETOP 3	
ADP.5.V... Singolo solenoide One solenoid		Q max. l/min. 120	P max. bar 320	INTERFACE CETOP 5	

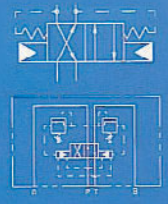
EMERGENZA MANUALE A LEVA PER ELETTROVALVOLE CETOP - EMERGENCY CONTROL LEVER FOR SOLENOID VALVES

VARIANTE LE LE VARIANT		Per elettrovalvole ON-OFF ADC3 / AD3E For ON/OFF solenoid valves ADC3 / AD3E			
---------------------------	---	---	--	--	---

VALVOLE DIREZIONALI- DIRECTIONAL CONTROL

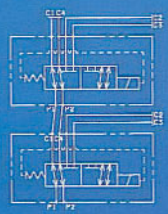
VALVOLE AD INVERSIONE AUTOMATICA - AUTOMATIC RECIPROCATING VALVES

AD.3.I...		Q max. l/min. 30	P max. bar 320	INTERFACE CETOP 3
AD.5.I...		Q max. l/min. 100	P max. bar 320	INTERFACE CETOP 5
AD.3.RI...		Q max. l/min. 25	P max. bar 320	INTERFACE CETOP 3
AD.5.RI...		Q max. l/min. 70	P max. bar 320	INTERFACE CETOP 5







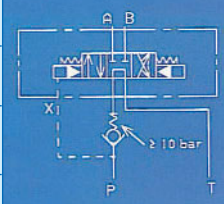
SELETTORI ELETTRICI A SEI VIE - FLOW DIVERTER VALVES

CDL 04.6... Versione componibile Stackable version		Q max. l/min. 20	P max. bar 250	INTERFACE CETOP /
CDL 06.6... Versione componibile Stackable version		Q max. l/min. 50	P max. bar 250	INTERFACE CETOP /
ADL 06.6... Versione componibile Stackable version		Q max. l/min. 40	P max. bar 320	INTERFACE CETOP /
ADL 10.6... Versione componibile Stackable version		Q max. l/min. 80	P max. bar 320	INTERFACE CETOP /



VALVOLE PILOTATE - PILOTATED VALVES

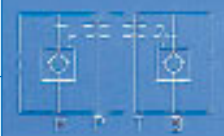
ADPH.5...		Q max. l/min. 120	P max. bar 250	INTERFACE CETOP 5
		Valvole pilotate a comando elettrico, pneumatico, oleodinamico o leva Pilotated valves with solenoid, pneumatic, oleodynamic and lever operated pilot		
AD.H.5...		Q max. l/min. 100	P max. bar 320	INTERFACE CETOP 5
		Valvole pilotate a comando elettrico, pneumatico, oleodinamico o leva Pilotated valves with solenoid, pneumatic, oleodynamic and lever operated pilot		
AD.H.7...		Q max. l/min. 300	P max. bar 320	INTERFACE CETOP 7
		Valvole pilotate a comando elettrico, pneumatico, oleodinamico o leva Pilotated valves with solenoid, pneumatic, oleodynamic and lever operated pilot		
AD.H.8...		Q max. l/min. 600	P max. bar 320	INTERFACE CETOP 8
		Valvole pilotate a comando elettrico, pneumatico, oleodinamico o leva Pilotated valves with solenoid, pneumatic, oleodynamic and lever operated pilot		



VALVOLE MODULARI - MODULAR VALVES

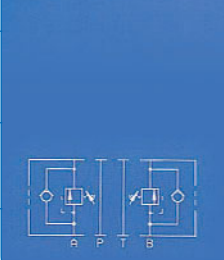
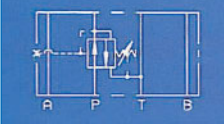
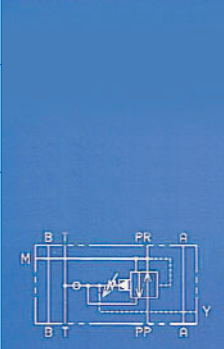
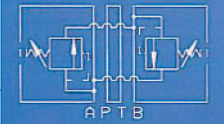
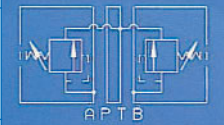
VALVOLE DI RITEGNO AD AZIONE DIRETTA E AD AZIONE PILOTATA - DIRECT CHECK VALVES AND PILOT OPERATED CHECK VALVES

AM.2.UD... Azione diretta Direct operated		Q max. l/min. 20	P max. bar 250	CONTROLLO SULLE VIE CONTROL AT PORT P/T
AM.3.UD... Azione diretta Direct operated		Q max. l/min. 40	P max. bar 320	CONTROLLO SULLE VIE CONTROL AT PORT P/T/A/B/AB
AM.5.UD... Azione diretta Direct operated		Q max. l/min. 8	P max. bar 250	INTERFACE CETOP P/T/A/B/PT/AB
AM.2.UP... Azione pilotata Pilot operated		Q max. l/min. 20	P max. bar 250	INTERFACE CETOP A/B/AB
AM.3.UP... Azione pilotata Pilot operated		Q max. l/min. 40	P max. bar 320	INTERFACE CETOP A/B/B
AM.3.UP/1... Azione pilotata con preapertura Pilot operated With preopening		Q max. l/min. 40	P max. bar 350	INTERFACE CETOP A/B/AB
AM.5.UP... Preapertura di serie Pre-opening is standard		Q max. l/min. 80	P max. bar 250	INTERFACE CETOP A/B/AB
AM.7.UP...		Q max. l/min. 250	P max. bar 350	INTERFACE CETOP A/B/AB



VALVOLE CONTROLLO PRESSIONE - PRESSURE RELIEF VALVES

AM.2.VM... Valvole di massima pressione Pressure relief Valve		Q max. l/min. 20	P max. bar 250	A/B/P/AB
AM.3.VM... Valvole di massima pressione Pressure relief Valve		Q max. l/min. 40	P max. bar 320	A/B/P/AB
AM.5.VM... Valvole di massima pressione Pressure relief Valve		Q max. l/min. 80	P max. bar 350	A/B/P/AB
AM.3.VI... Valvole di massima pressione incrociata Crossline relief Valve		Q max. l/min. 40	P max. bar 320	A/B/AB
AM.5.VI... Valvole di massima pressione incrociata Crossline relief Valve		Q max. l/min. 80	P max. bar 250	A/B/AB
AM.3.VR... Valvola riduttrice di pressione con relieving - azione pilotata Pressure reducing valve with relieving - pilot operated		Q max. l/min. 40	P max. bar 320	P/A
AM.5.VR... Valvola riduttrice di pressione con relieving - azione pilotata Pressure reducing valve with relieving - pilot operated		Q max. l/min. 90	P max. bar 320	P/A
AM.3.RD... Azione diretta Direct operated		Q max. l/min. 40	P max. bar 320	P/A
AM.3.CP... Valvola di contropressione Back pressure valve		Q max. l/min. 40	P max. bar 320	A/B/AB
AM.5.CP... Valvola di contropressione Back pressure valve		Q max. l/min. 80	P max. bar 350	A/B/AB



VALVOLE MODULARI – MODULAR VALVES

VALVOLE CONTROLLO PRESSIONE - PRESSURE RELIEF VALVES

AM.3.VS... Valvola di sequenza Sequencing valve		Q max. l/min. 40	P max. bar 320	P	
AM.5.VS... Valvola di sequenza Sequencing valve		Q max. l/min. 90	P max. bar 320	P	
AM.3.SD... Azione diretta Direct operated		Q max. l/min. 40	P max. bar 320	P	

VALVOLE DI REGOLAZIONE DELLA PORTATA - FLOW REGULATORS

AM.2.QF...		Q max. l/min. 20	P max. bar 250	A/B/AB	
AM.3.QF...		Q max. l/min. 40	P max. bar 250	A/B/P/AB	
AM.5.QF...		Q max. l/min. 80	P max. bar 250	A/B/P/AB	
AM.7.QF...		Q max. l/min. 250	P max. bar 350	INTERFACE CETOP A/B/AB	
AM.66...		Q max. l/min. 40	P max. bar 320	A/B/AB/P/T/PT	
AM.88...		Q max. l/min. 80	P max. bar 320	A/B/AB/P/T/PT	
A.66...		Q max. l/min. 40	P max. bar 320	A/B/P/T/A1/B1	
A.88...	Q max. l/min. 80	P max. bar 350	A/B/P/T/A1/B1		


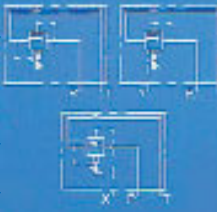
CONTROLLO PRESSIONE E CONTROLLO PORTATA PRESSURE RELIEF VALVES AND FLOW CONTROL

VALVOLE CONTROLLO PRESSIONE MONTAGGIO A PIASTRA - PRESSURE RELIEF VALVES SUBPLATE MOUNTING


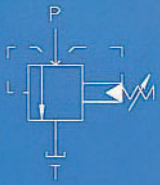
PVR.3/PVR.U.3 Riduttrici con e senza valvola di ritegno Reducing valves		Q max. l/min. 40	P max. bar 5+320	INTERFACE CETOP 3	
PVR.5/PVR.U.5 Riduttrici con e senza valvola di ritegno Reducing valves		Q max. l/min. 90	P max. bar 5+320	INTERFACE CETOP 5	
PVS.3/PVS.U.3 Di sequenza con e senza valvola di ritegno Sequencing valve		Q max. l/min. 40	P max. bar 5+320	INTERFACE CETOP 3	
PVS.5/PVS.U.5 Di sequenza con e senza valvola di ritegno Sequencing valve		Q max. l/min. 90	P max. bar 5+320	INTERFACE CETOP 5	
V*P.16... Montaggio a piastra Subplate mounting		Q max. l/min. 150	P max. bar 15+400	RP 69H R06	
V*P.25... Montaggio a piastra Subplate mounting		Q max. l/min. 350	P max. bar 15+400	RP 69H R08	

CONTROLLO PRESSIONE E CONTROLLO PORTATA PRESSURE RELIEF VALVES AND FLOW CONTROL




VALVOLE CONTROLLO PRESSIONE MONTAGGIO A PIASTRA - PRESSURE RELIEF VALVES SUBPLATE MOUNTING

V*L.16... Montaggio in linea In line mounting		Q max. l/min. 150	P max. bar 15+400	RP 69H R06	
V*L.25... Montaggio in linea In line mounting		Q max. l/min. 350	P max. bar 15+400	RP 69H R08	
VM*...		Massima pressione - Pressure relief valve			
VS*...		Valvola di sequenza - Sequencing valve			
VU*...		Valvola di esclusione - Exclusion valve			

VALVOLE DI MASSIMA PRESSIONE - PRESSURE RELIEF VALVES


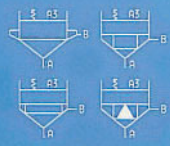
VMP.10... Azione diretta Direct operated		Q max. l/min. 40	P max. bar 50+320	IN LINEA - IN LINE	
VMP.20... Azione diretta Direct operated		Q max. l/min. 80	P max. bar 30+250	IN LINEA - IN LINE	
VMP.30... Azione pilotata Pilot operated		Q max. l/min. 100	P max. bar 50+320	IN LINEA - IN LINE	

REGOLATORI DI PORTATA A DUE E A TRE VIE - 2 AND 3-WAY COMPENSATED FLOW RATE REGULATORS

QC.3.2... A due vie con o senza ritegno del flusso 2 way with or without internal check valve		Q max. l/min. 0+35	P max. bar 320	CETOP 3	
QC.3.2.G... A due vie con sistema antijump 2 way with anti jump system		Q max. l/min. 0+35	P max. bar 320	CETOP 3	
QC.3.3... A tre vie con o senza ritegno del flusso 3 way with or without internal check valve		Q max. l/min. 0+22	P max. bar 320	CETOP 3	
VD.40... Valvola di decelerazione Deceleration valve		Q max. l/min. 40	P max. bar 180	IN LINEA - IN LINE	

VALVOLE A CARTUCCIA - CARTRIDGE VALVES

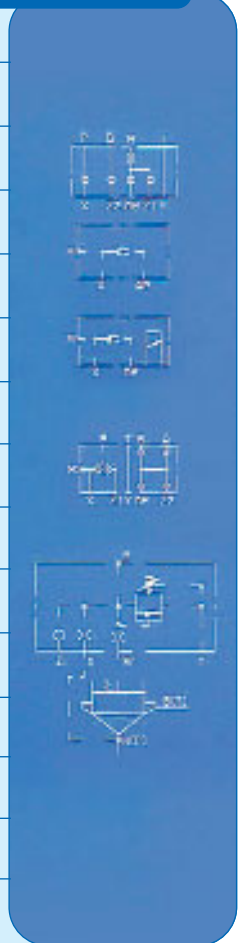
ELEMENTI LOGICI 2/2 - 2/2 LOGIC ELEMENTS

KEL.16...		Q max. l/min. 150	P max. bar 350	INTERFACE DIN 24342	
KEL.25...		Q max. l/min. 350	P max. bar 350	INTERFACE DIN 24342	
KEL 16/25.U...		Direzionali - Directional			
KEL 16/25.S...		Direzionali - Directional			
KEL 16/25.B...		Direzionali - Directional			
KEL 16/25.F...		Regolatori di flusso - Flow control			
KEL 16/25.R...	Con ricoprimento sensibilizzato - With sensitized cover				


VALVOLE A CARTUCCIA - CARTRIDGE VALVES

COPERCHI FUNZIONE PER ELEMENTI LOGICI 2/2 - COVERS FOR 2/2 LOGIC ELEMENTS

KEC.16...		Q max. l/min. 150	P max. bar 350	INTERFACE DIN 24342	
KEC.25...		Q max. l/min. 350	P max. bar 350	INTERFACE DIN 24342	
KEC.*.RI...		Direzionali con pilotaggio esterno - Directional with external piloting line			
KEC.*.CQ...		Direzionali con limitazione di corsa - Directional with stroke adjustment			
KEC.*.RC...		Direzionali con interfaccia NG06 - Directional with NG06 interface			
KEC.*.PC...		Valvole pilotate a sblocco idraulico - Pilot operated check valve			
KEC.*.SH...		Valvole di scambio incorporate - Valve with built-in shuttle valve			
KEC.*.SH...		Valvole di scambio e interfaccia NG06 - With built-in check valve and NG06 interface			
KEC.16...			Q max. l/min. 150	P max. bar 45+400	INTERFACE DIN 24342
KEC.25...			Q max. l/min. 350	P max. bar 45+400	INTERFACE DIN 24342
KEC.*.ME...			Valvola di massima pressione - Pressure relief valve		
KEC.*.MP...			Valvola di massima pressione interfaccia NG06 - Pressure relief valve with NG06 interface		
KEC.*.UE...	Valvola di esclusione interfaccia NG06 - Exclusion valve with NG06 interface				
KEC.*.UN...	Valvola di esclusione - Exclusion valve				
KEC.*.SL...	Valvola di sequenza - Sequencing valve				
					



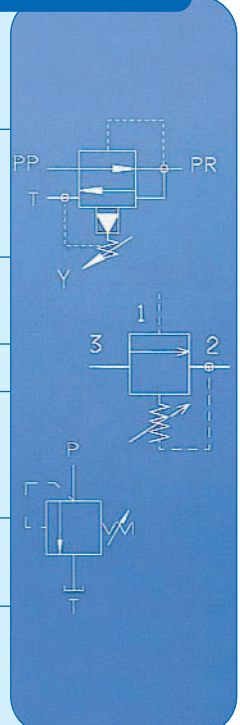
VALVOLE CON CONTROLLO ELETTRONICO DI POSIZIONE - CARTRIDGE VALVES WITH ELECTRICAL POSITION CONTROL

KRA.16...		Q max. l/min. 150	P max. bar 400	INTERFACE DIN 24342
KRA.25...		Q max. l/min. 350	P max. bar 400	INTERFACE DIN 24342



VALVOLE A CARTUCCIA - CARTRIDGE VALVES

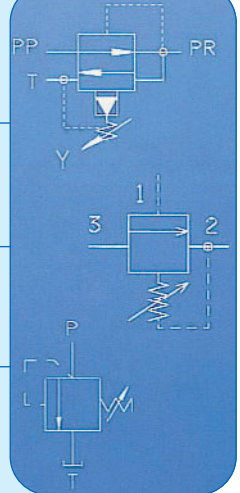
CVR.06 Riduttrice di pressione con relieving Pressure reducing valve with relieving		Q max. l/min. 20	P max. bar 320	/
CVR.20... Riduttrice di pressione con relieving Pressure reducing valve with relieving		Q max. l/min. 90	P max. bar 320	/
CVS.20... Valvola a sequenza Sequencing valve		Q max. l/min. 90	P max. bar 320	/
CRC.1...		Valvola di massima pressione - Pressure relief valve corpo per CVR - CVS 20 - Body for CVR - CVS 20		
CCP.20... Compensatore di pressione a 2 vie 2 way pressure compensator		Q max. l/min. 50	P max. bar 250	/
CVE.06 Valvola di esclusione Exclusion valve		Q max. l/min. 50	P max. bar 250	/
CMP.02... Valvola di massima pressione azione diretta Pressure relief valve direct operated		Q max. l/min. 20	P max. bar 250	/






VALVOLE A CARTUCCIA - CARTRIDGE VALVES

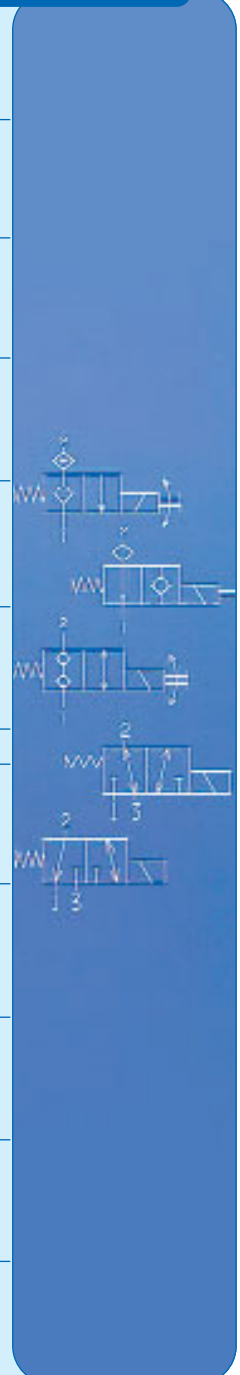
VALVOLE A CARTUCCIA - CARTRIDGE VALVES

CMP.06... Valvola di massima pressione azione diretta Pressure relief valve direct operated		Q max. l/min. 30	P max. bar 290	/
CMP.10... Valvola di massima pressione azione diretta Pressure relief valve direct operated		Q max. l/min. 40	P max. bar 320	/
CMP.20... Valvola di massima pressione azione diretta Pressure relief valve direct operated		Q max. l/min. 80	P max. bar 250	/
CMP.30... Valvola di massima pressione azione pilotata Pressure relief valve pilot operated		Q max. l/min. 100	P max. bar 50+350	/




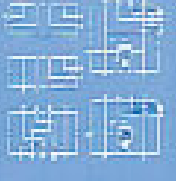


ELETTROVALVOLE DI RITEGNO A CARTUCCIA E CORPO VALVOLA - CARTRIDGE VALVES AND CASINGS

CRP.02.NC... Azione pilotata, normalmente chiuse Pilot operated, normally closed		Q max. l/min. 30	P max. bar 300	3/4 " 16 UNF -2B
CRP.02.NA... Azione pilotata, normalmente aperte Pilot operated, normally open		Q max. l/min. 30	P max. bar 300	3/4 " 16 UNF -2B
CRD.01.NC... Azione diretta - Normalmente chiuse Direct operation - Normally closed		Q max. l/min. 8	P max. bar 300	3/4 " 16 UNF -2B
CRD.02.NC... Azione diretta - Normalmente chiuse Direct operation - Normally closed		Q max. l/min. 15	P max. bar 210	3/4 " 16 UNF -2B
CRD.04.NC... Azione diretta - Normalmente chiuse Direct operation - Normally closed		Q max. l/min. 30	P max. bar 250	3/4 " 16 UNF -2B
CRD.03.NC... Azione diretta, attacchi AMP Junior Direct operation AMP Junior connections		Q max. l/min. 20	P max. bar 250	3/4 " 16 UNF -2B
CVC...	blocchi porta CR- Body for CR			
C2V.02... A 2 vie 2 posizioni A 3 vie 2 posizioni 2/2 cartridge valve 3/2 cartridge valve		Q max. l/min. 12	P max. bar 250	3/4 " 16 UNF -2B
C3V.00... / C3V.02... A 2 vie 2 posizioni A 3 vie 2 posizioni 2/2 cartridge valve 3/2 cartridge valve		Q max. l/min. 12	P max. bar 210	3/4 " 16 UNF -2B
C3V.03... A 2 vie 2 posizioni A 3 vie 2 posizioni 2/2 cartridge valve 3/2 cartridge valve		Q max. l/min. 20	P max. bar 250	7/8 " 16 UNF -2B
C3V.05... A 3 vie 2 posizioni attacchi AMP Junior 3/2 cartridge valve AMP Junior connection		Q max. l/min. 20	P max. bar 250	3/4 " 16 UNF -2B
C3V.00.NR1... A 3 vie 2 posizioni attacchi Deutsch 3/2 cartridge valve AMP Deutsch connection		Q max. l/min. 12	P max. bar 210	3/4 " 16 UNF -2B



BASI - SUBPLATES

BASI SINGOLE CON E SENZA VALVOLA DI MASSIMA PRESSIONE E BASI componibili SINGLE STATIONS SUBPLATES WITH OR WITHOUT RELIEF VALVE

BS.*... Basi singole Single station Subplates		Q max. l/min. /	P max. bar /	INTERFACE CETOP 2/3/5	
BS.VMP.10...		Q max. l/min. 40	P max. bar 320	INTERFACE 3/8" BSP	
BS.VMP.20...		Q max. l/min. 80	P max. bar 250	INTERFACE 1/2" BSP	

BASI MULTIPLE - MODULAR COMPONENTS SUBPLATE AND MULTI STATIONS SUBPLATE

BC.*... Basi componibili-Versione serie e parallelo Parallel or series configuration		Q max. l/min. /	P max. bar /	CETOP 2/3/5	
BC.*... BM.2... Versioni serie e parallelo, attacchi laterali e posteriori Parallel or series configuration, rear and side connects		Q max. l/min. 20	P max. bar 250	2	
BM.3... Basi multiple - Versione serie o parallelo Modular Components parallel or series configuration		Q max. l/min. 40/60	P max. bar 320	3	
BM.5... Basi multiple - Versione serie o parallelo Modular Components parallel or series configuration		Q max. l/min. 100	P max. bar 350	5	



VALVOLE MONTAGGIO IN LINEA - IN LINE VALVES

VALVOLE DI RITEGNO, REGOLATRICI DI FLUSSO E SALVAMANOMETRI CHECK VALVES FLOW CONTROL VALVES AND PRESSURE GAUGES SHUT-OFF

VR Unidirezionali Check valve		Q max. l/min. 12+310	P max. bar 350+210	/	
VRS... Ritegno pilotato semplice Simple acting piloted check valve		Q max. l/min. 12+85	P max. bar 350+300	/	
VRD... Ritegno pilotato doppio Double acting piloted check valve		Q max. l/min. 12+85	P max. bar 350+280	/	
QFU... Regolatrici di flusso Flow control valve		Q max. l/min. 12+85	P max. bar 300+250	/	
QFS.U... Regolatrici di flusso Flow control valve		Q max. l/min. 15+40	P max. bar 300+280	/	
QFM.U... Regolatrici di flusso Flow control valve		Q max. l/min. 12+85	P max. bar 300+250	/	
QFB... Regolatrici di flusso Flow control valve		Q max. l/min. 12+85	P max. bar 300+250	/	
QFS.B... Regolatrici di flusso Flow control valve		Q max. l/min. 15+40	P max. bar 300+280	/	
QFM.B... Regolatrici di flusso Flow control valve		Q max. l/min. 12+85	P max. bar 300+250	/	

VALVOLE MONTAGGIO IN LINEA - IN LINE VALVES

VALVOLE DI RITEGNO, REGOLATRICI DI FLUSSO E SALVAMANOMETRI CHECK VALVES FLOW CONTROL VALVES AND PRESSURE GAUGES SHUT-OFF


VPF... Valvole di ritegno (paracadute) One way check valve		Q max. l/min. 25+150	P max. bar 350	/
VPM... Valvole di ritegno (paracadute) One way check valve		Q max. l/min. 25+150	P max. bar 350	/
MR...		Rubinetti salvamanometri - Pressure gauge shut-off		

CONTROLLO PROPORZIONALE - PROPORTIONAL CONTROL


ELETTROVALVOLE PROPORZIONALI SINGOLO E DOPPIO SOLENOIDE PROPORTIONAL DIRECTIONAL VALVES WITH ONE OR TWO SOLENOIDS

XD3.A... Singolo solenoide One solenoid		Q max. l/min. 3/10/15/20/25	P max. bar 350	CETOP INTERFACE 3
XDP.3.A... Singolo solenoide One solenoid		Q max. l/min. 8/15/25/40	P max. bar 25+150	CETOP INTERFACE 3
XD.5.A... Singolo solenoide One solenoide		Q max. l/min. 30/45/60	P max. bar 350	CETOP INTERFACE 5
XDP.5.A... Singolo solenoide One solenoide		Q max. l/min. 60/100	P max. bar 320	CETOP INTERFACE 5
XD.3.C... Doppio solenoide Two solenoids		Q max. l/min. 3/10/15/20/25	P max. bar 350	CETOP INTERFACE 3
XDP.3.C... Doppio solenoide Two solenoids		Q max. l/min. 8/15/25/40	P max. bar 350	CETOP INTERFACE 3
XD.5.C... Doppio solenoide Two solenoids		Q max. l/min. 30/45/60	P max. bar 350	CETOP INTERFACE 5
XDP.5.C... Doppio solenoide Two solenoids		Q max. l/min. 60/100	P max. bar 320	CETOP INTERFACE 5
VARIANTE LE LE VARIANT		Per elettrovalvole proporzionali XD3 - For proportional solenoid valves XD3		

ELETTROVALVOLE PROPORZIONALI SINGOLO E DOPPIO SOLENOIDE CON TRASDUTTORE DI POSIZIONE PROPORTIONAL DIRECTIONAL VALVES WITH ONE OR TWO SOLENOIDS WITH POSITIONAL TRANSDUCER

XD3.A... Singolo solenoide One solenoid		Q max. l/min. 8/15/25/40	P max. bar 350	CETOP INTERFACE 3
XDC.3C... Singolo solenoide One solenoid		Q max. l/min. 8/15/25/40	P max. bar 350	CETOP INTERFACE 3

IDROSTATI A 2 E A 3 VIE - 2 AND 3 WAY HYDROSTATS

AM.3H.2V...		Q max. l/min. 25	P max. bar 350	CETOP INTERFACE 3
AM.5H.2V...		Q max. l/min. 65	P max. bar 350	CETOP INTERFACE 5
AM.3H.3V...		Q max. l/min. 65	P max. bar 350	CETOP INTERFACE 3
AM.5H.3V...		Q max. l/min. 25	P max. bar 350	CETOP INTERFACE 5



CONTROLLO PROPORZIONALE - PROPORTIONAL CONTROL

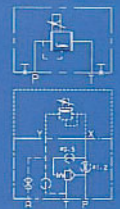
REGOLATORI DI PORTATA PROPORZIONALI COMPENSATI PROPORTIONAL PRESSURE COMPENSATED FLOW CONTROL VALVES

XQP.3... A 2/3 vie in anello aperto Open loop 2/3 way compensation		Q max. l/min. 6/12/22/32/44	P max. bar 250	CETOP INTERFACE 3
XQP.5... A 2/3 vie in anello aperto Open loop 2/3 way compensation		Q max. l/min. 45/75/105	P max. bar 250	CETOP INTERFACE 5
XQ.3... Con o senza limitatore di pressione manuale With or without manual pressure relief valve		Q max. l/min. 5/10/17/28	P max. bar 250	CETOP INTERFACE 3




VALVOLE DI MASSIMA PRESSIONE PROPORZIONALE - PROPORTIONAL PRESSURE RELIEF VALVES

XP.3... Con o senza limitatore di pressione manuale With or without manual pressure relief valve		Q max. l/min. 2,5	P max. bar 320	CETOP INTERFACE 3
AM.3.XMP... Amplificatrici di portata per valvole di massima proporzionali Amplifier valves for proportional pressure relief		Q max. l/min. 2+30	P max. bar 320	CETOP INTERFACE 3




ELETRONICA - ELECTRONIC

SCHEDE ELETTRONICHE FORMATO EUROCARD PER ELETTROVALVOLE PROPORZIONALI ELECTRONIC CARDS FOR PROPORTIONAL VALVES

SE.AN2		EUROCARD Singolo solenoide / One solenoid
		EUROCARD Doppio solenoide / Two solenoids
		EUROCARD Controllo valvole con trasduttore di posizione / With positional transducer control
		Potenza / Power 30+40W
		Tensione di alimentazione / Supply voltage 24+35VDC
		Frequenza P.W.M. – Guadagno – Compensaz. banda morta – Tempo di rampa regolabile – separato per ogni canale 0 P.W.M. frequency – Gain setting - Dead band setting – Ramp time Adjustable for each channel

SCHEDE ELETTRONICHE PER LIVELLAMENTO DI PIATTAFORME MOBILI A SICUREZZA "3" SECONDO "EN 954-1" ELECTRONIC CARDS FOR LEVELLING OF MOVABLE AERIAL PLATFORMS - CATEGORY "3" SAFETY ACCORDING TO "EN 954-1"

SE3.LN3...		EUROCARD In anello chiuso di posizione / Closed loop position
		Potenza max / Max. power 40W
		Tensione di alimentazione / Supply voltage 12VDC/24VDC
		PATENT PENDING n° MO2003A000296 Guadagno canale A e B - Regolabile separato per ogni canale - Controllo accelerazione - Compensazione banda morta - Regolabile Gain setting channel A and B - Adjustable for each channel - Acceleration control - Dead band setting - Adjustable

REGOLATORI ELETTRONICI PER VALVOLE PROPORZIONALI AD ANELLO APERTO ELECTRONIC CONTROLLERS FOR PROPORTIONAL VALVES (OPEN LOOP CONFIGURATION)

REM.S.RA...		OCTAL Singolo solenoide / One solenoid
REM.D.RA...		UNDECAL Doppio solenoide / Two solenoids
		Corrente max in uscita / Max.output current 2.8A
		Potenza max / Max. power 40W
		Tensione di alimentazione / Supply voltage 12VDC/24VDC -12VDC/28VDC
		Frequenza P.W.M. – Guadagno – Compensaz. banda morta – Tempo di rampa regolabile – separato per ogni canale P.W.M. frequency – Gain setting - Dead band setting – Ramp time Adjustable for each channel

ELETRONICA - ELECTRONIC

CONNETTORI ELETTRONICI PLUG-IN PER VALVOLE PROPORZIONALI SINGOLO SOLENOIDE ELECTRONIC AMPLIFIER PLUG VERSION FOR SINGLE SOLENOID PROPORTIONAL VALVE

CEP.S...



Alimentazione elettrica / Power supply	12/24 VDC
Potenza massima assorbita / Required power	30W
Corrente massima erogata Lmax / Output current Lmax	2,5 Amp

Adatto a valvole proporzionali serie: XD.*A..., XDP.*A..., XP.3..., XQP.*..., CXQ.3...
 Tipo di protezione: IP65 - Regolazione guadagno di corrente - Regolazione corrente minima di polarizzazione - Regolazione tempo di rampa
 Suitable for proportional valves series: XD.*A..., XDP.*A..., XP.3..., XQP.*..., CXQ.3...
 Type of protection: IP65 - Gain adjustment - L minimum adjustment
 Ramp time adjustment

SCHEDA ELETTRONICA MOVIMENTI NON CONTEMPORANEI NOT SIMULTANEOUS MOVEMENT ELECTRONIC CARD

SE.MNC...



Corrente massima assorbita/ Max current absorbed	15 A
2 ingressi analogici / 2 analogue inputs	0+10V

10 ingressi digitali 12 o 24 V opto isolati / 2 uscite proporzionali max 2,5 A con retroazione di corrente / 11 uscite on/off max 3 A / 2 uscite di tensione ausiliaria 10 V stabilizzati / Connessione elettrica: connettore 23 PIN + connettore 14 PIN
 Tipo di protezione: IP 67
 10 digital inputs 12 or 24 V optoisolated / 2 proportional outputs max 2,5 A with current feedback / 11 on/off outputs 10 V stabilized / Electrical connection: connector 23 PIN + connector 14 PIN / Protection type: IP 67

MANIPOLATORE SINGOLO (JOYSTICK) - HEAVY DUTY SINGLE JOYSTICK BASE

JC.3.D...

JC.4.D...

JC.5.D...



Manipolatori di tipo potenziometrico con impugnatura ergonomica e ricentraggio a molla
 Rugged joystick with potentiometer and ergonomic handle. The joystick has a spring return lever for center position

Impugnatura a 3,4,5 pulsanti / Handle with 3,4,5 switches

Con o senza pulsante uomo presente /With or without operator present trigger switch

Con o senza protezioni in gomma siliconica su pulsantiera
 With or without silicon rubber protection on the switches handle

Tipo di protezione: IP 65 / Nr. di cicli meccanici: 7.500.000
 Resistenza agli shock meccanici: 20 G per asse / Uno o due assi proporzionali
 Protection type: IP 65 / Mechanical life: 7.500.000 cycles
 Shock resistance: lever 20 G type _ sine 6 MS / One or two proportional axis

JOYSTICK FINGERTIP SINGOLO ASSE - SINGLE AXIS FINGERTIP JOYSTICK

JC.F.D...



Leva di comando dal profilo basso e compatto - Compact low profile joystick

Leva di comando di tipo potenziometrico
 Singolo asse / Nr di cicli meccanici: 5.000.000 / Dimensioni ridotte
 Joystick with potentiometer
 Single axis / Mechanical life: 5.000.000 cycles / Compact

SISTEMI - SYSTEMS

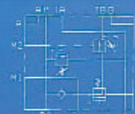
GRUPPI ALTA/BASSA PRESSIONE (DOPPIA POMPA) LOW/HIGH PRESSURE UNITS FOR DOUBLE PUMP SYSTEM

BA.60... / BA130...



Q max. l/min. 60+130	P max. bar 50+320	INTERFACE /
-------------------------	----------------------	----------------

Possibilità di montaggio superiore, laterale e multipli in serie o in parallelo
 Available upper, side and multiple mounting type in series or parallel



BASI SPECIALI CON CIRCUITO RIGENERATIVO AD ESCLUSIONE AUTOMATICA SPECIAL SBPLATE MOUNTINGS WITH AUTOMATIC EXCLUSION REGENERATING CIRCUIT

BS.5.RGA...

BS.5.RIA...




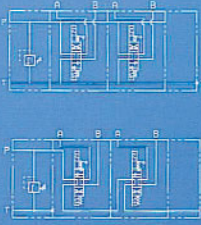
Versione con predisposizione per elettrovalvola ADP5E
 Version with presetting for ADP5E

Versione completa di valvola di inversione automatica speciale per sistema rigenerativo AD5IP2T1
 Version with AD5IP2T1






VALVOLE COMPONIBILI - STACKABLE VALVES


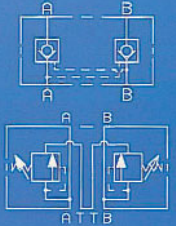
ELETTROVALVOLE CONTROLLO DIREZIONE DIRECTIONAL CONTROL STACKABLE VALVES

CDC.3... Distributore componibile on/off Directional control stackable valve		Q max. l/min. 30	P max. bar 250	CETOP INTERFACE 3	
CD.3... Distributore componibile on/off Directional control stackable valve		Q max. l/min. 40	P max. bar 250	CETOP INTERFACE 3	
VARIANTE LE LE VARIANT		Per distributore componibile on/off / For directional control stackable valve Per distributore componibile proporzionale CX3 / For proportional control stackable valve CX3			




ELETTROVALVOLE CONTROLLO PROPORZIONALE COMPONIBILI PROPORTIONAL CONTROL STACKABLE VALVES

CX.3... Distributore componibile proporzionale Proportional control stackable valve		Q max. l/min. 3/10/15/20	P max. bar 250	CETOP INTERFACE 3	
CX.Q.3... Regolatore di portata proporzionale compensato componibile Proportional pressure compensated stackable valve		Q max. l/min. 15/25	P max. bar 250	CETOP INTERFACE 3	

VALVOLE MODULARI COMPONIBILI MODULAR STACKABLE VALVES

CM02.3.P... Modulare di ritegno pilotata Modular piloted operated check valve		Q max. l/min. 15	P max. bar 250	CETOP INTERFACE 3	
CM.3.M... Modulare di massima pressione Pressure relief valve		Q max. l/min. 30	P max. bar 30+290	CETOP INTERFACE 3	

BASI CON CIRCUITO RIGENERATIVO AD ESCLUSIONE AUTOMATICA UNITS FOR MOUNTING

FE 02.3... Fiancate di entrata con CMP Inlet module with CMP		Q max. l/min. 15	P max. bar 250	G 3/8" - 9/16 - 18 UNF		
FE 10.3 Fiancate di entrata con CMP Inlet module with CMP		Q max. l/min. 30	P max. bar 320	G 3/8" - 9/16 - 18 UNF		
FE 10.P... Fiancate di entrata con CMP, valvola di messa a scarico Inlet module with CMP, venting valve			Q max. l/min. 30	P max. bar 300		G 3/8" - 9/16 - 18 UNF
FE.3.../ FU.3.../FI.3... Entrata/ uscita/ intermedia/ chiusura Inlet module/ outlet module		/	/	G 3/8" - 9/16 - 18 UNF		